

REAL SUCCESS FOR PNG LNG & VILLAGE COMMUNITIES

Issue 1 – May/June 2011

OL SINGAUT



From housewife to hospitality worker – Rhoda Gabe is now a trainee cook's assistant at Pioneer Camp.

The Alliance Group creates partnerships that deliver sustainable outcomes for all – that's one of our core objectives.

The group, comprising of The Alliance Management Group Limited, Hides Alliance Group Limited and Laba Alliance Group Limited, has been awarded some of the significant Catering and Camp Management contracts on the PNG LNG project, working closely with EHL and various contractors including CJJV, CCJV and SCN.

The Alliance Group has quickly

developed into the most successful Camp Management and Catering Company on the PNG LNG project.

Through its daily work of delivering services to clients and working with its Landco partners, one of the first areas of focus is the training and employment of people in project impact areas. Hundreds of workers from local villages are already employed at projects with Hides Alliance and Laba Alliance, and work is also underway to create sustainable businesses like local agricultural cooperatives to supply fruit and vegetables as the need

for produce increases with the development of each site.

A job for the first time, skills for a lifetime!

The real success stories are starting to emerge – stories of our people who are gaining valuable training and experience that is changing their lives.

One example is Rhoda Gabe who was a housewife just a few short months ago. Today, she assists with making lunch and dinner for hundreds of clients.

She had no training or experience in the hospitality and catering industry before commencing work at Pioneer Camp with LABA Alliance Group.

"My first day at work, I was chosen by the Executive Chef to assist him in cooking the day's menus." said Rhoda.

"I have experienced a new environment in my life in this catering job. I have learnt how to use different ingredients in different menus and recipe and I am now responsible for making different soups." she continued.

You can read more about how working with The Alliance Group is changing lives on pages 5 and 6 in Laba Oi Singaut.

The Challenge of Feeding the Thousands

AT PEAK – The Alliance Management Group will need to source food and be preparing:

- 48,000 meals per day
- 336,000 meals per week
- 1,344,000 meals per month
- 4,032,000 meals per quarter
- 16,128,000 meals per year

Mind boggling isn't it?

Read more on page 8 about how we are preparing to supply our project sites AND help build businesses in local communities.



INSIDE THIS ISSUE

Real success for PNG LNG & villages1	Skills for life 5
From humble beginnings.....2	Lab: The community by the sea6
Still time to celebrate achievements3	In profile - Michael Varapik 7
Hides: The community in the highlands4	Building local business.....8
	Healthy Life Program..... 7 & 8

Our Vision

To be the leader in LNG Catering and Facilities Management, providing superior quality services to our clients and customers delivering long term sustainability for our business partners

Our Values:

- Honesty and Loyalty
- Integrity and Fairness
- Respect for diverse cultures
- Commitment, Leadership and teamwork
- Continuous Improvement
- Initiative, persistence and responsibility
- Thinking, working and acting safely
- Equal opportunity
- Socially responsible for our communities and environment

From
the Boss

From Humble Beginnings Emerges a World Class Business



The Directors of The Alliance Management Group.
L-R Marcus Gosling, Colin Vale, Alistair Smylie,
Marc Soipang. Not pictured: Rashad Sinokrot,
Kevork Keushguerian

The Alliance Group was formed in October 2009 between NCS, the Leader in Camp Management & Catering Services in Papua New Guinea and GCC Services, an international remote site Catering, Camp management and construction company based in Kuwait.

The strength of this strong PNG company combined with international expertise from GCC Services brings together the knowledge to create a sustainable and successful company for the future for many PNG communities.

This is the true meaning of our slogan
Global Reach - Local Touch.

Work has begun at Alliance with PNG LNG Projects

Since July 2010, The Alliance Group has been servicing its contracts with the PNG LNG project which today spans from the Mountains of the Southern Highlands to the blue seas of the of the Central province coast just outside Port Moresby.

High up in the rugged highlands:

There are a number of Camps in the Hides area which are operated by Hides Alliance Group. The start-up team from Alliance mobilised to Well Pad A Camp in July 2010, serving their first meal in trying conditions only a couple of days after arriving on site! In service now for over 10 months, the team have expanded and developed, coping well with their challenging environment. You can read more about their stories in Hides OI Singaut, pages 3 and 4.

The jewel by the sea:

The largest Camp site, considered the 'jewel in the crown' for Catering and Camp Management on the PNG LNG project is the catering and camp for the LNG liquefaction

plant (EPC 3) located outside of Port Moresby in Central Province for client Chiyoda JGC Joint Venture (CJJV). The new company, Laba Alliance Group Limited was formed in partnership with Laba Holdings Limited, as a condition of the contract award to The Alliance Group, who followed a lengthy tender and negotiation process with CJJV.

Laba Alliance Group has now been operating Pioneer camp since September 2010 – you can read more about this in Laba OI Singaut, page 5 and 6.

Training and Development of our people

Central to the success of our activities is ensuring that skills and knowledge are developed within the local communities. This will provide both immediate returns through jobs and competency transfer but also in the long term to ensuring that our people have the ability to enter the job market with a solid skill base at the end of the construction phase of the project. We are proud to bring you some of our success stories in OI Singaut.

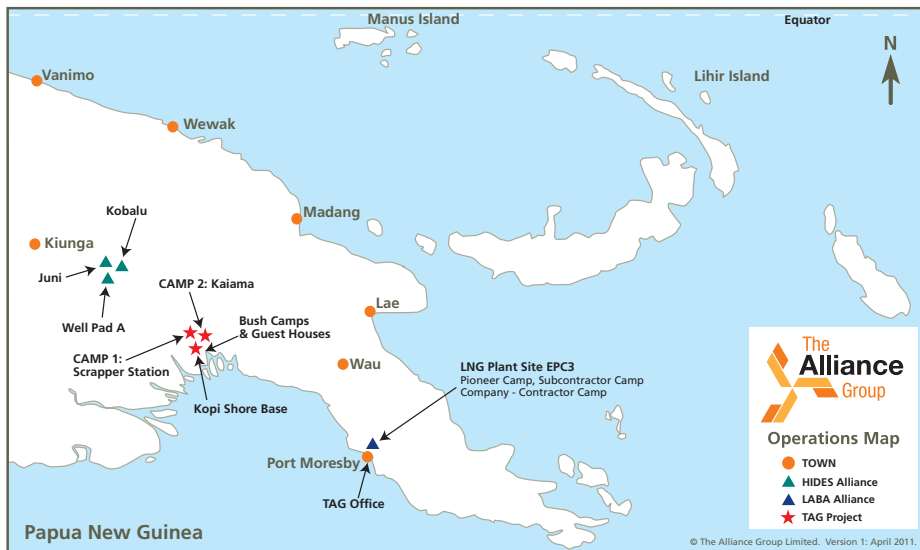
We trust that you will enjoy reading this first issue of OI Singaut

The Directors



The icon of our logo is a dynamic wheel which represents:

- the three partners in our business relationship: the client, The Alliance Group and our Landco partner
- continuous activity and momentum - always in motion and moving forward
- "stepping up" and moving forward clockwise motion indicated by the positioning of the spokes of the wheel
- support – the spokes of the wheel represents partner organisations NCS and GCC Services which formed an alliance – the result is The Alliance Management Group Limited. This is also represented by the two core colours of the NCS (Gold) and GCC Services (Orange)
- the word Alliance is bold, strong, upright and central – supported by the spokes of the wheel



The Alliance Group Projects: April 2011

The Alliance Group has also won the tender to supply catering and camp management services to SpieCapag Niugini (SCN) this company will be constructing the on shore pipeline which includes major camps, fly camps and guest houses along a 600km stretch between Kopi and Hides.

Project	Location	Configuration	Client
EPC5A	Kopi to Hides	9 camps / 12 bush camps and guest houses / 3000 mandays	SCN



DOING WELL AT WELL PAD A

The project at Well Pad A - Hides Areas started in July 2010 with approximately 35 people on site including 4 Alliance staff who arrived in Tari. They stayed at Ambua Lodge for the first week of operations – almost 2 hours drive each way to and from site.

On day 1 the small team scrubbed the entire kitchen and dining room from ceiling to floor. Day 2, they served their first meal – a lunchtime barbecue! Everyone was surprised that the team were capable of serving this first meal so quickly. That's the Alliance team spirit in action – getting in and doing the job!

Since those early days, the site has continued to grow very fast, and has put pressure on the team to find, hire and train more local people to help the crew perform their duties.

The Hides Alliance team is currently operating with about 93% Local Hire and 7% Non-National and National Hire.

The project has had more challenges that most in its short history and yet, despite this Alliance staff have proved that they are committed and motivated to perform their jobs of keeping staff fed and housed as well as providing take-away meals at camps close by.

A partnership between



Glowing reports from Kobalu

The Kobalu Camp is approximately 20 minutes from Tari on the Highlands Highway.

This is a relatively small camp and has been operating since August 2010 and is frequently visited by client senior management

Esso Highlands Limited (EHL) are very happy with the food quality and the fact that Hides Alliance are a can do company with nothing being too much trouble to assist the client.

At the end of the day Hides Alliance are there to make sure people have clean clothes, clean rooms and good food in their stomach to focus on the construction of the project. A home away from home.

Our female staff excel



Jayali Hetaya (left) is congratulated by Rachael Ososo Yoshi for progressing well in skills training

Our female staff in particular are proving to be dedicated, fast learners – with an attitude toward team work which is a great example to everyone.

We have a small, dedicated team including trainer Rachael Ososo Yoshi who previously worked with NCS at Hidden Valley and proving to be a great leader and example for our female staff who she trains.

“Your dedication to working hard can advance you in your career with opportunities to learn and develop skills.” she said – as she congratulated Jayali Hetaya our first female leading hand in housekeeping who will soon commence computer training.

Games, social nights and celebrations lift spirits

In spite of the rain, a celebration was held for the project achieving 5,000,000 LTI free man hours. Bringing people from all parts of the project together, the celebration on site was enjoyed by all. Alliance staff provided a quality BBQ feast topped off by delicious cakes from the bakery.

There was also a quiz night organised which really helped to lift spirits and enable people to relax and get to know each other better. The evening was so successful, regular games evenings are being planned as well as themed banquet nights.

The team at Well Pad A hope to share more of their news with their colleagues from other sites in coming issues of OI Singaut!



HIDES Alliance Group Projects: April 2011

Have a look at the Operations map on page 8 to see the location of these sites.



Project	Location	Configuration	Client
Camp 1 Well Pad A	Hides	250 man camp	CCJV
Kobalu	Kobalu	100 man camp	EHL
Juni Construction Camp	Juni	40 man camp	EHL

Business Partnership with Alliance Brings Professionalism and Support



HGDC Chairman: Libe Parindali (pictured centre) with colleagues at Kobalu overlooking the lush Hides mountain ranges.

Hides Gas Development Company (HGDC) is the umbrella group for the local Hides landowner companies representing 14 regional landowner companies with a fully represented board of 15 local landowner, recognized traditional leaders.

HGDC was established in 2009 and is recognised as the umbrella Landowner company for the upstream section of the PNG LNG Project by developer ExxonMobil. Since then, HGDC have entered into Joint Ventures with several highly reputable companies to ensure a high quality delivery of service provision – including The Alliance Group for camp catering and janitorial services operating under Hides Alliance Group Limited.

The local community at Hides is one that is experiencing major and significant change. Since signing the PNG LNG agreement between the Government, ExxonMobil and the Landowners, the mobilisation to site and the construction start up has been rapid.

People across the Southern Highlands are witness to enormous structural and economic change that is having impact on people's daily lives. HGDC is working hard to make sure landowners are participating meaningfully in the project either through HGDC directly or through partnership

arrangements such as with The Alliance Group.

Chairman of HGDC, Libe Parindali said that communication to the community about project developments and progress is important. He wants to encourage the community to remain involved and keep participating through commercial opportunities and employment as the project progresses.

"It's an exciting time for the Southern Highlands and for Papua New Guinea. I see many opportunities coming with this development and we must take these on with both arms open." he said

Libe continued to say that many business opportunities are being created and as landowners we should use these opportunities to maximise the benefits and improve our way of living.

"We should look beyond the construction phase to ensure we position ourselves and our community for the future. As landowners we should also use these opportunities now to educate our children so they will have the necessary skills to do other things after the life of the project."

HGDC chose to work with The Alliance Group because of the level of professionalism, experience and commitment that the partnership would bring to the catering and camp management business. HGDC Management would like to see the same high standards achieved with all of their JV companies, bringing value back to our company and people.

Libe explained that he has already seen many local employees gain skills and work experience in the areas of catering and camp management.

"These skills will provide our people with long term employment and potentially career development outside the area. The standards of training and mentoring that The Alliance team bring to the local employees and HGDC is outstanding. We are very happy with the relationship and the progress made thus far." he continued.

"The Alliance Group will not be here forever." said Libe "We need to learn as much as possible so that skills are passed onto the local landowners in the event that these companies move on."

HGDC currently employs over 1500 PNG nationals in service businesses that support the PNG LNG Development, such as: Labour Hire, Camp Catering, Camp Maintenance, Security, Guard Security, Vehicle service & Maintenance, Light Vehicle Hire and Medium to Heavy Vehicle Hire.

As far as work with Hides Alliance Group is concerned - Activities in the catering and camp management business continues to grow with operations at Kobalu, Well Pad A and Juni all underway. Congratulations to all of those involved in these activities to date.

The mission statement of HGDC is

"Building a sustainable competitive organisation that will service the commercial needs of the PNG LNG Project and beyond...."

THE OPPORTUNITY TO LEARN SKILLS FOR LIFE

For many people in the local area, working with Laba Alliance Group at Pioneer Camp is the first paid employment they have had. Before the LNG project commenced at Portion 152, many in the Laba community carried out voluntary work in the community and lived a simple lifestyle of fishing and farming.

There were few opportunities or incentives to learn new skills or to gain paid, long-term employment.

It is fair to say that most of the local workforce, many who now work with the Laba Alliance Group, had no prior training or work experience in the Catering Industry before starting at Pioneer Camp.

Alliance Group Training Supervisor, Leanne Broadbent said that in the short time that we have had to initiate and induct new employees, we have been able to build a new workforce of capable employees who are now working full time in the catering industry.

"We have found on the whole that there has been a willingness to learn new skills and I think that our people are quickly becoming a workgroup who are keen to learn and who have been quick to recognise the benefits of full time employment." she said.

"Not only is employment giving people income for the first time, Laba people are experiencing a change of lifestyle as wage earners in their communities, learning skills and gaining valuable experience that will benefit them for life" continued Leanne.

Since the mobilisation of the Pioneer camp with an initial start-up crew of 17 in September 2010, employment numbers have steadily increased as the sites develop and progress. At the peak of the project – we will need to employ over 600 people to support the camp of 10,000 residents.

"We have many talented and capable local people at Pioneer Camp. Those who show

A partnership between



enthusiasm, interest and commitment will succeed to become candidates for supervisory and management positions. We are only six months into our contract and we are very proud of the success stories emerging from our growing team" she added.

The kinds of positions available include:

- Catering Department: chefs, kitchen hands, catering assistants
- Housekeeping: Janitorial, laundry and housekeeping
- Administration: office
- Warehousing and maintenance
- If you are interested in opportunities with Laba Alliance Group, please contact the Laba Holdings office on 7100 1810.

Meet "camp mum" Vicki



Vicki Auason has learned computer skills on the job and is the face residents see when they check-in.

Vicki Auason enjoys her job very much. She has become "camp mum" and is the friendly, reassuring face that residents see when they check-in to site.

Like many other women from her village, Vicki was an unemployed housewife involved in community affairs before starting at Pioneer Camp. Her previous experience working had included a short time with Steamships – and also familiarisation with

the mining camp environment up at Porgera many years ago. More recently she had some experience in housekeeping and had attended a few courses in literacy and health education. All these experiences stood Vicki in good stead and she was able to adapt to this new work environment, and was quickly recognised by her supervisors for her potential to take on greater responsibilities.

"My first day at Pioneer Camp, I was doing housekeeping. After a few weeks in Housekeeping I was selected to be the Receptionist. I am now responsible for doing check-ins and check-outs for the clients living on site. I am also supervising the Housekeeping department at the moment." she said.

"One main thing I've learnt is to use the computer! I had no experience in operating one, and to play a role that holds many responsibilities which are all new to me. I have learnt to do all this with the support of my supervisor and bosses."

Jimi is in Charge!



Jimi is in charge of waste disposal

Before Jimi Vagi started working at Pioneer Camp he was a community helper and a leader in the youth group carrying out church activities in the village. He was unable to complete his schooling due to school fee problems and has had no previous hospitality and facilities training.

"My first day of work I collected rubbish, emptied bins and also I did a little housekeeping. I was also burning the rubbish. From the experience I've gained, I am now the Chief Incinerator Operator, taking care of all the rubbish that is brought to be burnt." he said.

"This is my first job. I've learnt to appreciate my job and I have learned many new things in the new environment, like speaking, writing and reading English."

LABA Alliance Group Projects: April 2011

Have a look at the Operations map on page 8 to see the location of these sites.



Project	Location	Configuration	Client
Pioneer, Subcontractor & Contractor Camp	Portion 152	10,500 man camp +2000 day workers	CJVV

Development brings Change and Opportunity

LABA Alliance Group Limited is the company contracted to provide all camp services to the Pioneer, Contractors & Sub Contractor Camps at the LNG Plant Site at Portion 152 Central Province.

Laba Holdings became an official business partner of The Alliance Management Group on 19 October 2010 – formalising the company Laba Alliance Group Limited. Chairman and CEO, Raho Kevau has a big responsibility to his community – and also to his business partners.

Laba Holdings represents the four villages in the Central Province project area; Boera, Papa, Lea Lea and Porebada, with a combined population of 20,000 plus people.

“As business partners, we are dependent on each other for success.” he said “Together, we need to get the strategy right to ensure that we have a sustainable outcome for our community at the end of the project. That’s one of our key business focuses.” he continued.

“NCS is a success story that Laba want to replicate. We feel that we are only able to be here working with the developers because of your vision – and your 17 years of experience!”

Laba Holdings manages labour hire, security and catering services for LNG project sites known as EPC 3 – just 20km from Port Moresby.

This close-knit community has existed largely as subsistence farmers relying on the land and the sea to live. The PNG LNG project certainly has presented the most significant change to village life – changing the socio economic landscape of the community forever.

“Of course this business and scale of work is not a natural part of our culture or life – and not all of our groups are comfortable with the development. Yet – this is the opportunity



Raho Kevau (left) with Marc Soipang, Director of NCS – sharing expertise and experience for success in a new era and venture, Laba Alliance Group

of our lives – and we want to be part of the success story, learn from our business partners and leave a legacy for the future with long-term sustainable skills and business opportunities”. said Raho

Making the Most of the Small Window of Opportunity

Raho said that many people in his community – men and women, young (and not so young) have gained employment and are learning new skills very fast – and this is rapidly changing their lifestyle and expectations.

“I want to make people aware that this is the time NOW to create opportunities for the future so that as a community, we can continue to have businesses and earn a living at the end of this project.” he said.

“We all need to work hard now, learn as much as we can, save what we earn and invest in the future. I want you all to realise that this is a once in a lifetime opportunity, one not to be wasted.” he continued

Raho is looking within the Laba community for his future leaders and those that have the vision for Laba’s success. “For those who WANT to be leaders and take key roles in the future – have to work together now. Come and see me and we can start planning for our future success” he said.

Lab a is a company dedicated to job creation and development of sustainable businesses that enhances the wealth and future opportunities for our people: Building futures and creating prosperity. Working together for the future of our people.



19 October 2010 – An Important Day with the Formalisation of Laba Alliance Group Limited

The signing ceremony was held on location at the Pioneer Camp attended by representatives from Esso Highlands Limited, Directors from both Laba Holdings and The Alliance Group and members of the Papa, Boera, Lea Lea and Porebada Landco’s and communities.

Michael Varapik - The Local Touch

National Content & Community Affairs Manager

In profile



Michael Varapik National Content & Community Affairs Manager

The Alliance Management Group is very lucky to have a man like Michael Varapik as its key representative. His experience working in PNG and with landowner businesses, associations and communities and developers is second to none.

Michael's role is National Content & Community Affairs Manager. He works directly with leaders in landowner organisations, local communities and government, representing Alliance in business and community related issues associated with the company's contractual obligations in providing camp management, catering and support services to the LNG Project in PNG.

Given the international mix of nationalities associated with the project, this new role is diverse and complex with a focus on developing and managing relationships for the group. His responsibilities and objectives include:

- Key representation for TAG with landowner organisations in respect of economic opportunities and community initiatives
- Ensuring that the national content of the business across all company departments is appropriately represented within the company

- Identifying and supporting sustainable business opportunities in the communities such as commercial fishing and farming in the Laba villages to supply fresh food requirements not only to the LNG Project but to other markets as well in PNG
- Continue to build the team and develop its role to respond more positively to the growing scope of needs and in line with the broad objectives of the National Content Plan

The complexity of the tasks and associated outcomes are such that Michael must rely on his judgement and experience to plan, organise and accomplish goals. "Every day I undertake such a variety of tasks that may involve leading and directing the work of others. A wide degree of creativity, latitude and hands-on work is required" he said.

The experience and know-how to succeed

Michael has had a very distinguished career and has held General Management and Finance positions with organisations including Lower OK Tedi Investment Company Limited, Copra Marketing Board of PNG, PNG Coconut Commodities Limited, Motor Vehicles Insurance Trust and Air Niugini.

Prior to joining TAG, Michael was General Manager of Lihir Mining Area Landowners Association (LMALA) based in Lihir Island, New Ireland Province. His primary role was to promote the welfare of the landowners and to represent them in negotiations with the developer.

When asked why he wanted to work with TAG, Michael said "TAG's area of work presents a unique set of challenges as a new organisation with a mammoth task of providing camp management, catering and support services to the LNG Project in PNG".

"Our team is world class and really does have the focus of delivering on our promises to our clients and working in partnership with landowner communities. This is the Global Reach - Local Touch in action! I am inspired to work with and be part of the supportive, growing TAG team at this time" he said.

In working with the communities, Michael feels that the challenges remain in managing people's expectations through the process and lifespan of a complex operation and development that is very different to village life that landowners know and are used to.

"We need to continue to work with our leaders and key stakeholders towards greater understanding about what is truly expected and achievable from both sides of the fence" he said.

"This is SERIOUS business and it is going to take time in communicating, educating and gaining support and commitment of all stakeholders to ensure that we can all work together towards the common goal within our communities and also to take hold of these real opportunities".

Michael comes from Kokopo in East New Britain Province, and has lived in Port Moresby for 37 years. A dedicated family man, Michael enjoys spending time with his wife, 5 children and 6 grandchildren.



Michael is made an honorary elder in Mt Hagen during a recent visit.



Healthy Life Programme

Next time you walk into one of our dining rooms keep your eye out for the **Healthy Life Program** information on walls and on the tables.

The Healthy Life Program has been specially produced to help educate clients and staff about some very basic and simple diet and lifestyle principles that affect us all. The resources provide a balanced view of a particular topic with some practical tips on changing behaviour or habits.

The table talkers have proved particularly popular and interesting reading in English AND Pidgin. We hope that this will also help people improve their understanding of both languages!

The **Scary Tale of Sugar** and **The Good and Bad about Salt** is at your site now.



ANSWERS: Across: 4:Flour, 5:Eggs, 6:Chicken, 7:Porik, 8:Pasta, 10:Cheese, 11:Milik, Down: 1:Popcorn, 2:Fruit, 3:Vegetables, 7:Pizza, 9:Steak

The PNG LNG Project presents a real challenge to The Alliance Group in particular with providing adequate provision of food and produce to feed the thousands at numerous project sites.



Local producers at Mt Hagan Fresh Food Market show great interest in the possibilities for supplying Alliance businesses with fresh produce.

At the height of construction which will be in 2012, total camp site residents at one of our sites – our largest site (EPC3 PNG LNG Plant Site outside of Port Moresby) will see us feeding up to 10, 000 camp residents plus 2,500 day workers. In camps in the Southern Highlands, Gulf and Western Provinces, we expect our numbers will exceed 3,500 per day.

That's a lot of produce needed at constant supply!

There is an increasing need to develop local supply lines.

Our challenge looking forward is to ensure that fresh foods and produce is available and supplied in a consistent manner, is of the highest quality and prepared in accordance with international standards to suit the taste buds of our international guests.

It is also part of our commitment according to the National Content Plan under "Supplier Development – invest time, people and resources to develop PNG business to form a competitive industrial base, as well as the provision of local goods and services".

Representatives from The Alliance Group recently commenced investigating opportunities with local businesses and family groups from Central Province for viable and sustainable commercial fishing and farming ventures. In the highlands, the team also visited Mt Hagen Fresh Food Market, holding talks with local representatives about how the local market works and opportunities for distribution further up the highlands to the other LNG camps and down to Port Moresby for the LNG Plant Site.



Fresh, quality produce in Mt Hagan.

The team toured the market and was amazed at the quality and abundance of fresh foods – fruits and vegetables being produced by local farmers – and see potential for working with the local community – who were enthusiastic about the opportunity to create a bigger market for their local produce.

Scary tale of Sugar

The sweet things we eat often give us great pleasure and an energy boost at the end of the day. It's a SCARY TALE of how dangerous eating too much sugar can be for your health.



Sugar is:

- white or brown crystals that are refined from sugar cane.
- from natural sources, like honey, maple syrup, milk and fruit. Natural sugars are better than refined sugars.

ADDICTIVE

- particularly when you are consuming prepared foods made from refined sugars.

For more information - and healthy tips on breaking the sugar addiction - see the posters and table talkers on your site.

How well do you know your food?

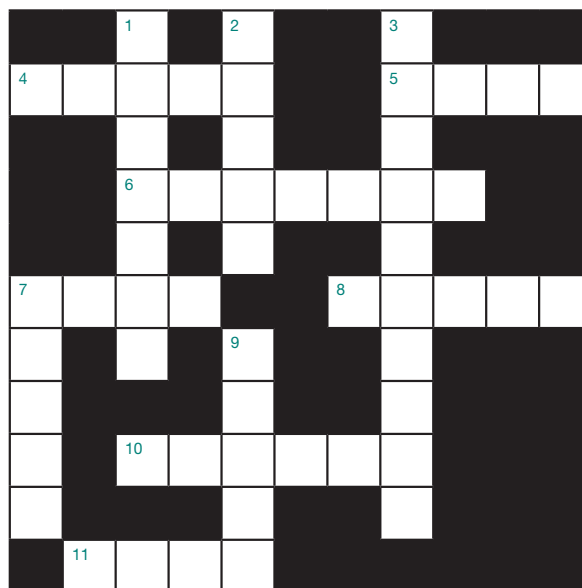
CLUES - FOOD

Across:

- Used for baking
- Protein in a shell
- Poultry
- The other white meat
- Great with sauce
- American or Swiss
- Liquid dairy

Down:

- Corn snack
- Best when ripe
- Green is good
- Type of pie
- Rump or fillet



ABOUT OL SINGAUT:

Ol Singaut is the newsletter of The Alliance Group

This issue: Issue 1 - May/June 2011

Information contained in this publication is correct at time of printing.

Editorial Team:

Editor/Production Manager: Sue Liu

Contributions for this issue were received from the team:

Michael Varapik, Leanne Broadbent, Mike Robson, Glen Claydon,

Paul Bonner, Marcus Gosling and

Arend van der Burgt

YOUR COMMENTS AND FEEDBACK

Please provide your comments and feedback via the contact page on our website www.alliancegroup.png.com

© 2011 The Alliance Management

Group Limited

PO BOX 2034 Boroko, NCD,

Papua New Guinea